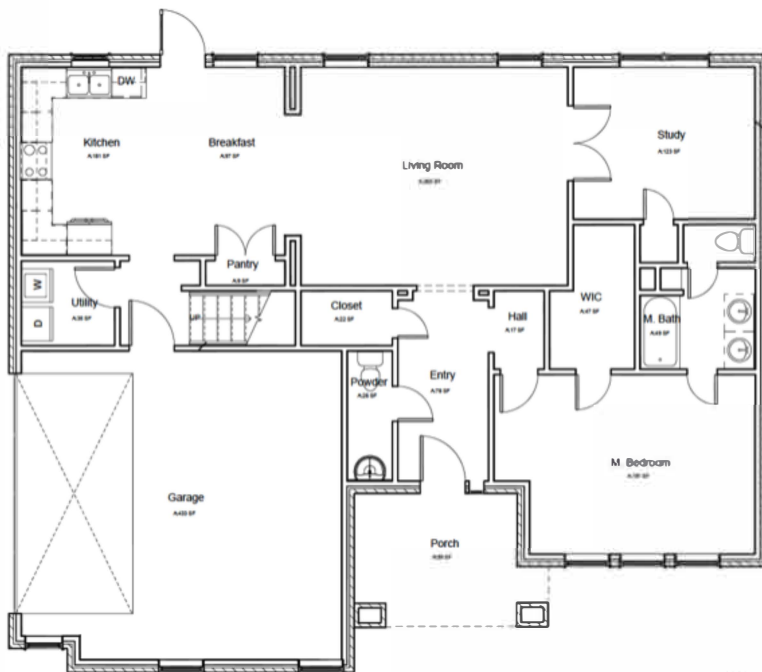




# Newport **SG**

1,800 SQ FT



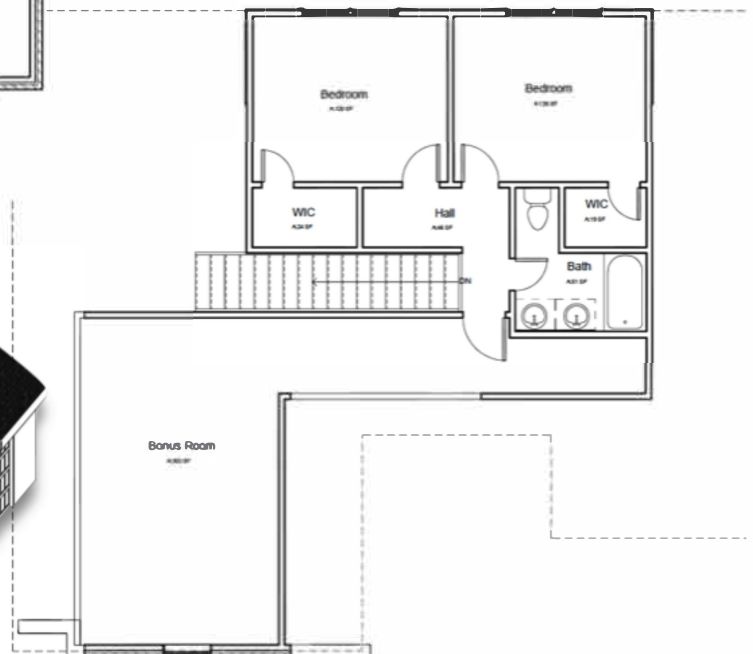
## FEATURES

Single family home, two story, 3 bedrooms, 2.5 bathrooms, study or 4th bedroom, framed Bonus Room available.

This beautiful home features a full brick exterior with hardy-plank eaves, and an architectural roof, post tension concrete slab, independently certified OG+E Energy Positive Home (exceeds Energy Star v2.5 qualifications).



- \* Elevation and 3D views may vary.
- \* Images are for illustrative purposes only.



milestone builders